

WHAT

For more information, call the toll-free number:

1-866-PAP-EXAM
(1-866-727-3926)

or visit our Web site at
WWW.CANCERBOARD.AB.CA/ACCSP



Alberta Cervical Cancer Screening Program

2202 - 2nd Street S.E.
Calgary, AB T2C 3C1

Local Contact Information:

IF YOU ARE BETWEEN THE AGES OF 18 AND 69 AND HAVE EVER HAD SEXUAL INTERCOURSE, THEN YOU NEED TO HAVE A PAP TEST

UNDER REVISION

does it mean if you have an Abnormal **PAP TEST?**

It is important to maintain a balance.

Balance in this matter means:

- Having regular pap tests so that cervical changes can be caught early enough to be treated and cured.
- Keeping appointments for any follow-up that is needed.
- Asking questions of your doctor, nurse or healthcare provider.

This pamphlet is based on the Alberta Clinical Practice Guideline (CPG) for Cervical Cancer Screening



Alberta Cervical Cancer Screening Program

Women, as the givers of life, have a responsibility to the Creator, themselves, their family and the community to maintain their physical, spiritual, emotional and mental well-being.

WHAT IS AN ABNORMAL PAP TEST?

An abnormal Pap test means that cells taken from your cervix look different than normal cells when examined under a microscope.

The Pap test can show different types of cell changes.

WHAT DO THE CELL CHANGES MEAN?

Abnormal cell changes can be mild or moderate/severe depending on how different the cells are on the cervix. There can be many different things that cause these changes.

- Infection or inflammation of your cervix
- HPV (human papillomavirus) present on your cervix

There is a toll-free number on the back of this pamphlet if you have questions about HPV.

- Cancer of the cervix - only a small number of women with abnormal cell changes have cervical cancer.

All of these cell changes can be managed and treated.

WHAT HAPPENS AFTER AN ABNORMAL PAP TEST?

Your doctor, nurse, or healthcare provider will arrange the next steps for you, depending on your abnormal cell changes.

Usually, one of the following things will happen after an abnormal result:

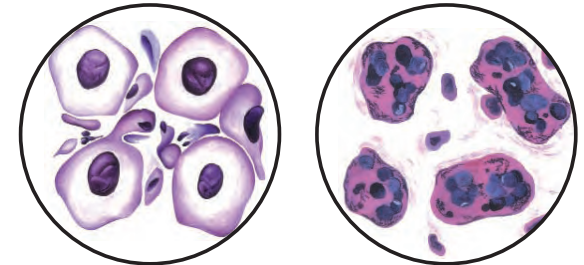
- You may have a repeat Pap test with a colposcopy in 3 to 6 months.
- You may have a colposcopy. The cervix is looked at closely with a special magnifying tool called a colposcope. It stays outside your body and helps the doctor see changes better.
- You may need to see a gynecologist (a doctor who specializes in women's reproductive systems).

Since the Pap test (like many medical tests) is not perfect, it is important to be tested on a regular basis to lessen the chance of missing any abnormal cell changes.

The following pictures can give you an idea how cells look under a microscope.



Mild cell changes
(Low-grade SIL, CIN I)



Moderate/Severe
cell changes
(High-grade SIL,
CIN II-III)

Cancer cells